



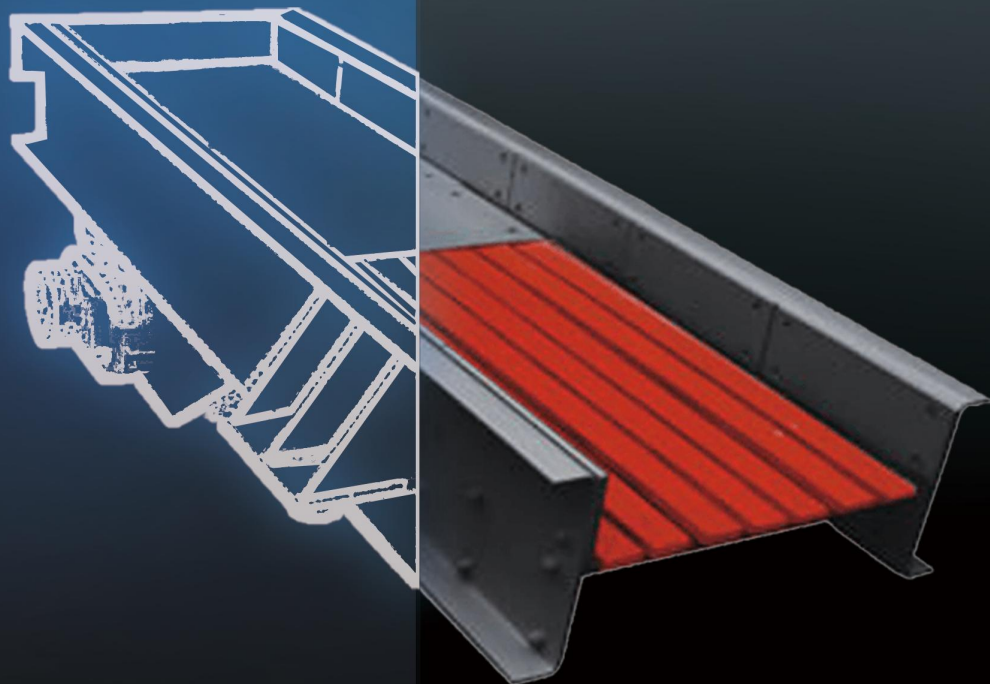
DING BO

# ZSW Vibrating Feeder

---

Capacity: 96-1500t/h  
Max. Input Size: 450-1400mm

---



Craftsmanship  
Shape the reputation of trust



# Features

## **Having Prescreening Function & Wide Applications**

Dingbo's ZSW Vibrating Feeder can be used to feed various ores, stones, river pebbles, construction wastes and other lump and granular materials. The feed chute is equipped with single layer of grate bars, which can simply pre-screen the materials to remove the fine materials and sundries in the raw materials.

## **Double Eccentric Shaft Vibration Exciter Stronger Than Ordinary Ones**

ZSW Vibrating Feeder adopts double eccentric shaft vibration exciter, which is of powerful exciting force, stable amplitude, uniform and continuous feeding and high production efficiency, making material receiving equipment reach the optimal working state.

## **Simple Structure, Strong Adaptability**

ZSW Vibrating Feeder is small, light, simple and compact. It has no rotary parts and few quick-wear parts. It has strong adaptability to all kinds of ores, especially viscous materials, and it can run under dusty or watery environment.

## **Low Noise, No Pollution**

To avoid dust pollution and noise, ZSW Vibrating Feeder supports the closed structure in response to environment protection under the trend of developing "green mines".

## **Sufficient Supply of Spare Parts, Worry-free Operation**

Dingbo is the manufacturer, we take responsibility for every machine produced by ourselves. We can offer customers technical services about products and original spare parts to ensure the worry-free operation.



### **Application**

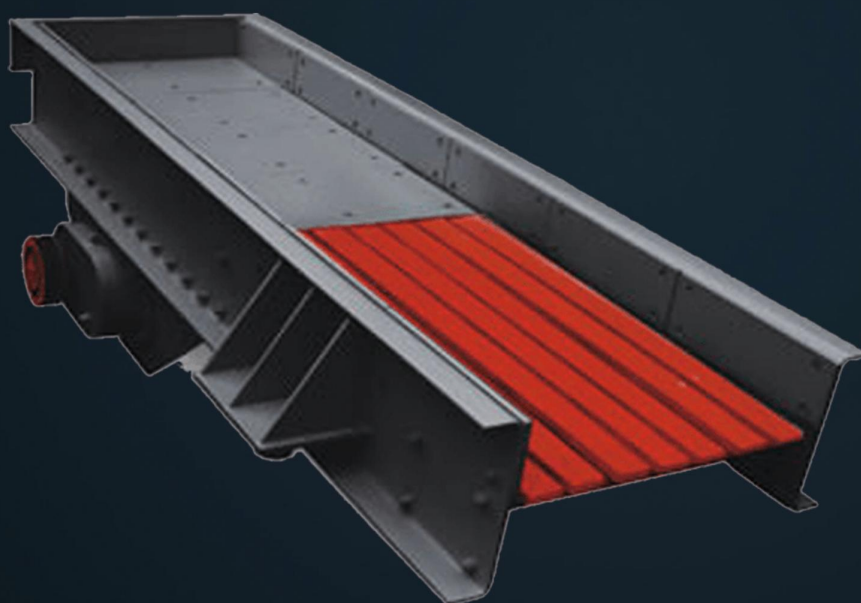
Metallurgical, coal, mineral processing, building materials, chemical engineering, grinding, etc.

### **Material**

Granite, limestone, concrete, lime, plaster

ZSW Series Vibrating Grizzly Feeder is mainly used to feed material into the primary crusher homogeneously and continuously. Meanwhile, it can screen the fine material and make the crusher more powerful.







# THE JAW CRUSHING RANGE

Model	Max Feed Size (mm)	Capacity (t/h)	Motor Power (kw)	Installation Angle (°)	Overall Dimensions (LxWxH) (mm)	Size of Funnel (mm)
ZSW-300×85	450	100-160	7.5	2880×2050×2150	3-5	2800×850
ZSW-380×96	500	160-230	11	3880×2175×1957	3-5	3800×950
ZSW-490×110	580	200-300	15	4957×2371×2125	3-5	4900×1100
ZSW-590×110	600	200-300	22	5957×2467×2151	3-5	5900×1100
ZSW-490×130	750	400-560	22	4980×3277×1525	3-5	4900×1300
ZSW-600×130	750	400-560	22	6080×3277×1525	3-5	6000×1300
ZSW-600×150	1000	500-900	30	6080×3541×1545	3-5	6000×1500
ZSW-600×180	1200	700-1200	37	6080×3852×1770	3-5	6000×1800
ZSW-600×200	1400	900-1800	45	6080×4094×1810	3-5	6000×2000
ZSW-600×240	1400	1500-2000	75	6078×4511×2289	3-5	6000×2400

**Notice:** Any change of PEW Jaw Crusher technical data shall not be advised additionally.



# WORKING PRINCIPLE

A ZSW Vibrating Feeder is composed of a feed chute, a vibration exciter, spring supports and a transmission device. The vibration exciter, consisting of two eccentric shafts (driving shaft and driven shaft) and gear pair, vibrates the feed chute. Driven by the motor, the driving shaft works under the action of the triangular belt. Next, gears on the driving shaft rotates the driven shaft. So, the rotation direction of driven shaft shall be contrary to that of driving shaft. In the process, the chute vibrates to convey materials continuously.



DING BO

Whatsapp:+8613817259661

E-mail:sales@dingbocrusher.net

Official website:<https://www.shdingbo.com>

Address:No.365, Chuanhong Road, Pudong New Area, Shanghai, China

